



NINETEEN FIFTY

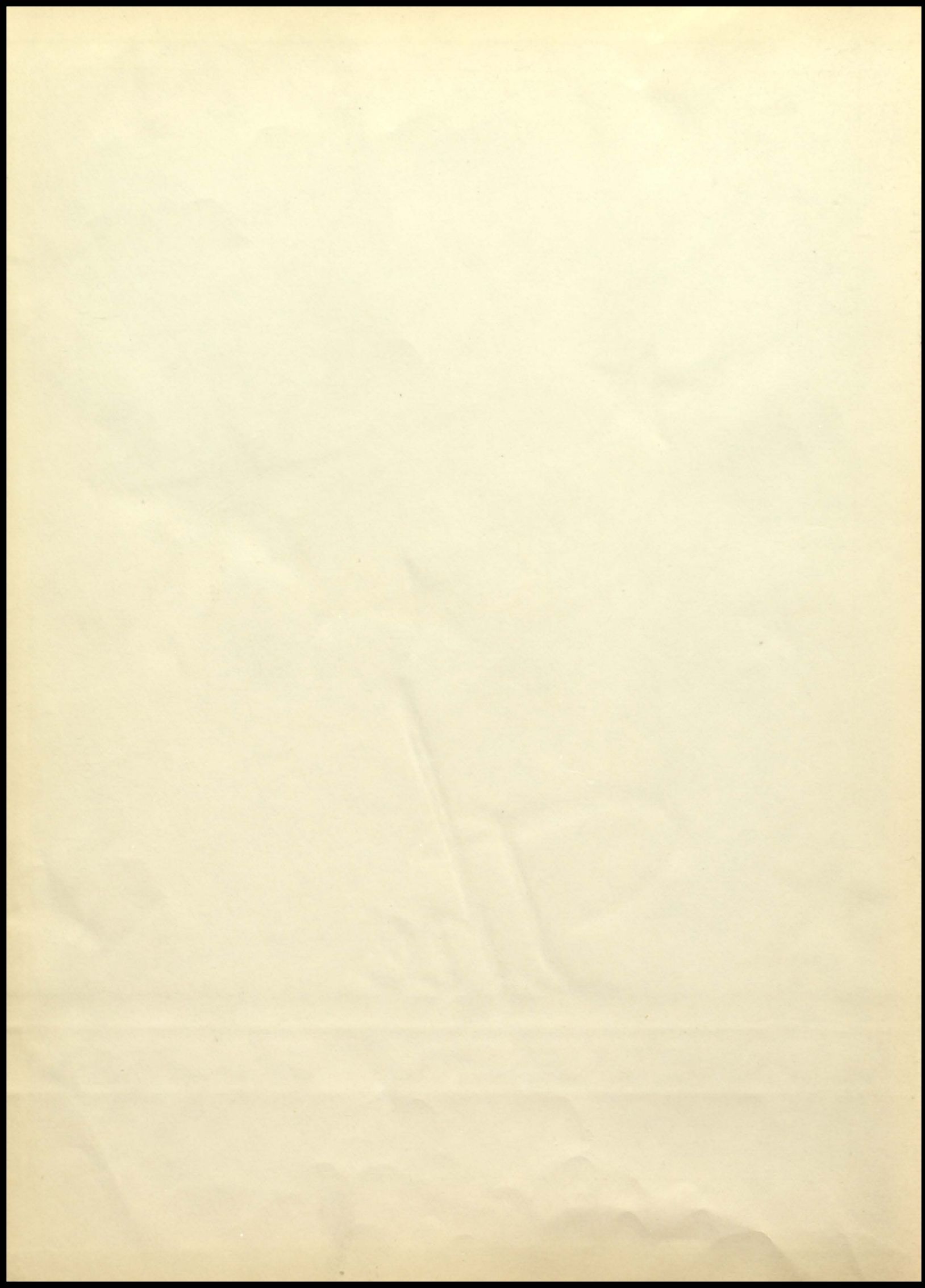
BEAVER MEMORIES



1860

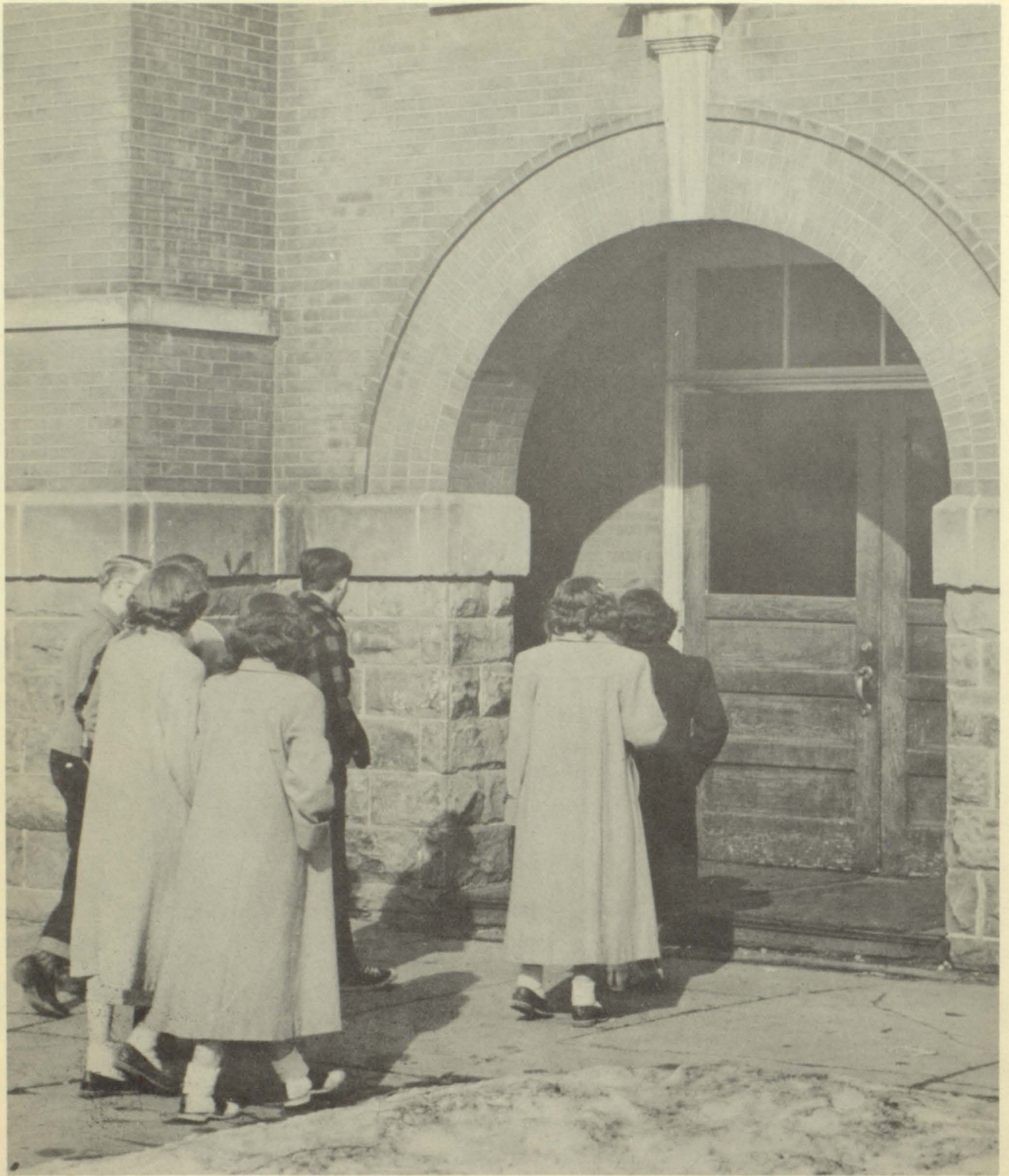
BILLER

1860



The  
BEAVER





**THEY ENTER**

# DEDICATION

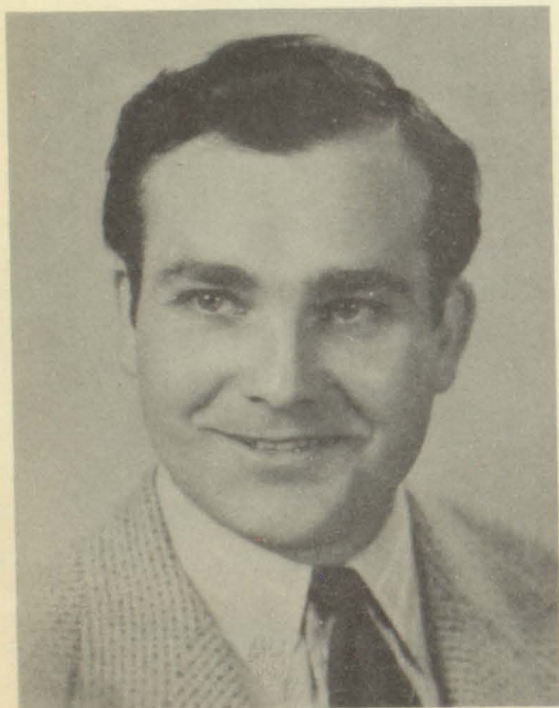


The gift questions in American History that sometimes meant the difference between a pass or a flunk; the light hearted way in which he taught psychology which made it seem more like a simple story rather than a complicated science of the mind; those helpful friendly chats about our future vocation; even those well-deserved chidings administered to rowdy or unprepared students, all these, and many more things, characterize our relationship with Mr. Bichler during the past three years. It is for all this that we, the class of '50, gratefully dedicate this book to Mr. Bichler - - our advisor, superintendent, and friend.

# ADMINISTRATION



DR. ZIEHR, MRS. BOWEN, MR. BICHLER, MRS. DICKENSON, MR. BALLIETT



MR I. HUDSON



MR. J. BICHLER



# THE FACULTY



MISS ACHTERKIRCH  
Home Economics



MR. CULP  
Music



MR. DAUMITZ  
Veteran and Driver  
Training



MRS. FUNK  
Mathematics  
Biology



MISS GOODMAN  
Commercial



MR. HAAS  
Athletics



MR. HULL  
Agriculture



MR. LEHMAN  
Industrial Arts  
Junior Business



MR. LYNCH  
English  
History



MRS. MORGAN  
English



MR. ROBERTSON  
Science  
Chemistry, Physics



MRS. BENNETT  
Seventh Grade  
Eighth Grade



MISS HESSEL  
Sixth Grade



MRS. LIVESEY  
Fifth Grade



MRS. HARDESTY  
Fourth Grade



MISS STEPLER  
Third Grade



MRS. WITTE  
Second Grade



MRS. HUMKE  
First Grade



Presented By  
*The Class*  
of 1950

# THE CLASS OF '50

Our knees were shaky; our knowledge lank,  
The day we became freshmen of the lowest rank.  
The future of our class was not hard to foretell,  
In activities as scholarship we vowed we'd excel.  
Half a hundred we numbered by count  
As we banded together our obstacles to surmount.  
The first of these troubles were the sophomore bums  
Who tortured and teased us 'til with fear we were numb.  
Six report cards and thirty-six weeks,  
Advanced us a grade, to a sophomore you speak.

As sophomores we entered in the fall of '47.  
To have underclassmen seemed almost like heaven.  
We o'erlooked the adage of a "tooth for a tooth"  
And initiated the frosh in a manner uncouth.  
The Christmas play by tradition was ours,  
Could this be a preview of our future stars?  
In music, in drama, in sports, and such things,  
We worked and slaved 'til we got in the swing.  
We had our class picnic in the middle of May.  
So closes memories of our sophomore days.

The busiest time in our high school career  
Undoubtedly was during our junior year.  
For then 'twas our duty, the seniors to honor  
With parties and prom and all sorts of splendor.  
The ring salesman came, we saw, he conquered;  
The news of their arrival was most happily heard.  
"Socially Ambitious" was staged in December,  
A day students and firemen will long remember.  
We planned many a week; we worked many a day  
To make our prom pretty by the fourteenth of May.

We trudged back to school, some happy, some blue,  
That our four years in high school were now nearly through.  
For now we were seniors with but 180 days,  
To delve into physics and learn human ways.  
To say nothing of enjoying all the fuss  
That our dear friends and teachers were making over us.  
We took a few trips, we had our pictures snapped,  
Our metal recourses by teachers were tapped.  
The climax of a four-year drama draws near.  
At last graduation with its pomp and glory is here,  
Addresses given, diplomas awarded,  
Out in this wide, wicked world we are forwarded.  
Out to gain ourselves a good name,  
Out to use the knowledge we've gained.

Will you other classes at the final bell,  
Be able to say you've done as well?  
You can feel mighty proud and feel mighty nifty,  
If you meet the goal of the Class of '50!

# SENIORS



**BARBARA BARTLETT**

Seldom works and never worries,  
never flunks and never hurries.

G. A. A. 1, 2, 3, 4; F. H. A. 1, 2, 4;  
Chorus 1, 2, 3, 4; Pep Club 4;  
Ensemble 4; Glee Club 2, 3, 4;  
Forensics 3, 4; Teacher's Secretary 4.

**DORIS BRUNZLICK**

I'll laugh when you're happy, I'll  
cry when you're sad; but here's  
warning you, beware when I'm mad.

One Act Play 2; Mixed Chorus 1, 2;  
G. A. A. 2, 3, 4; Glee Club 2, 3, 4;  
Ensemble 3, 4; Pep Club 4; Annual  
Staff 4; Forensics 2, 3, 4.



**DONNA BARTZ**

They say gentlemen prefer blondes.

F. H. A. 1, 2, 3, 4; Chorus 1, 2; News  
Staff 4; Teacher's Secretary 4; Office  
Secretary 4.

**PHILIP CHRISTIANSON**

Lincoln is dead, Washington is dead,  
and I don't feel so well myself.

Band 1, 2, 3, 4; Pep Band 1, 2, 3, 4;  
Orchestra 4; German Band 2, 4;  
Annual Staff 4; Basketball 1, 2;  
Baseball 1; Director Class Play 3;  
Pep Club 4.



**ARLYS BOETTCHER**

Those who meet her think she's quiet;  
Those who know her think she's a riot.

Chorus 1, 2; G. A. A. 2, 3, 4;  
Annual Staff 4; Teacher's Secretary  
4.

**MARGARET DONNELLY**

Here's to the girl with a heart and a  
smile, who makes this bubble of life  
worth while.

G. A. A. 2, 3; F. H. A. 1; Band 1, 2,  
3, 4; Pep Band 2, 3; Ensemble 2, 3,  
4; Chorus Accompanist 3, 4; Chorus  
1, 2, 4; One Act Play 1, 2; Class  
Play 3; Student Council 3; Class  
Officer 1, 4; News Staff 2, 3, 4;  
Annual Staff 3, 4; Forensics 1, 2, 3,  
4; Debate 3, 4; Office Secretary 4.



**PHYLLIS BOETTCHER**

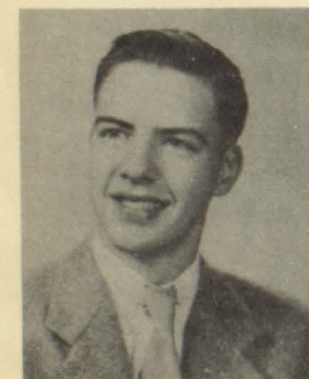
I always like school, especially the  
vacation part.

F. H. A. 3, 4; G. A. A. 2, 3; Annual  
Staff 4; Teacher's Secretary 4.

**HERBERT DONNER**

I think that too much study dete-  
riorates the mind.

Transferred from Chippewa Falls.



**CLARENCE BERRY**

Why teachers turn gray.

Basketball 1, 2, 3, 4; Football 1, 2,  
4; Track 1; Baseball 4; Pep Club 4;  
Stage Manager Class Play 3.

**DORIS DOUGLAS**

A business head on those fair  
shoulders.

G. A. A. 4; F. H. A. 1, 3, 4; Mixed  
Chorus 1, 2; Glee Club 3, 4; For-  
ensics 4; Pep Club 4



# SENIORS



**KATHLEEN EATON**

I chatter as I go, and I go on forever.

G. A. A. 1, 2, 3, 4; Ensemble 3, 4; Glee Club 1, 2, 3, 4; Chorus 1, 2; F. H. A. 1, 4; Class Play 3; Forensics 2, 3, 4.

**PATSY HANSON**

It's great to be alone, especially when there's a boy with you.

G. A. A. 1, 2, 3, 4; Ensemble 4; Pep Club 4; Band 1, 2, 3, 4; One Act Plays 1, 2; Chorus 1, 2; Glee Club 1, 4; News Staff 3, 4; Annual Staff 4; Pep Band 2, 3, 4; Forensics 1, 3, 4.



**GAIL ERDMAN**

A live wire never gets stepped on.

Pep Club 4; G. A. A. 2, 3, 4; F. H. A. 4; News Staff 4; Annual Staff 4; Student Council 4; Glee Club 1, 2, 3, 4; Ensemble 4

**EILEEN HASKINS**

Everette and I. United we stand, divided we fall.

Band 3, 4; F. H. A. 1, 2, 3, 4; G. A. A. 3, 4; Forensics 2; German Band 4.



**BILL GOEDE**

"The Great Lover" He loves two things in life—women and music.

Band 1, 2, 3, 4; Orchestra 1, 2, 3; German Band 1, 2, 4; Pep Band 1, 2, 3; Basketball 2, 3, 4; Baseball 1, 3, 4; News Staff 2, 3, 4; Annual Staff 3, 4, Editor 4; One Act Plays 1, 2; Class Play 3; Pep Club 4.

**JOYCE HERRICK**

Why waste time sleeping at night when you can do it in English class.

G. A. A. 1, 2, 3, 4; F. H. A. 1, 2, 4; Chorus 1, 2, 3; Glee Club 4; Ensemble 4; Pep Club 4.



**DOROTHY GREEN**

I know all the answers but not to the right questions.

F. H. A. 2, 3, 4; Pep Club 2, 4; Student Council 3. Class Play 3; Teacher's Secretary 4.

**MARION HOUN**

I might be a little flame, someday I'll set the world on fire.

G. A. A. 1, 2, 3, 4; F. H. A. 4; Glee Club 1, 2, 3, 4; Mixed Chorus 1, 2; Ensemble 4; Librarian 4; Library Council 4; Forensics 1, 2, 3; Newspaper Staff 3, 4; Pep Club 4; Annual Staff 4; One Act Plays 2; Class Play Business Manager 3.



**RUTH HADORN**

What's the use of doing it if you don't have to.

G. A. A. 3, 4; F. H. A. 3, 4; Pep Club 4; Annual Staff 4; One Act Plays 2.

**WILLIAM JOHNSON**

This lad is so very meek, even his shoes refuse to squeek.



# SENIORS

**JOYCE JONES**

She's true to one, one at a time.  
G. A. A. 1, 2, 3, 4; F. H. A. 4;  
Chorus 1, 2, 3, 4; Ensemble 2, 3, 4;  
Pep Club 4; Glee Club 2, 3, 4.



**JOAN KUBERA**

If she isn't giggling she's sure to be wiggling.

G. A. A. 2, 3, 4; Office Secretary 2, 3, 4; F. H. A. 3, 4; Band 2, 3, 4; Chorus 1, 2, 3; Glee Club 3, 4; One Act Play 2; Pep Club 4; Ensemble 4; Forensics 4; German Band 4.



**FRITZ KAWELL**

By eating Wheaties, girls!

Transferred from Cadott 3; Class Play 2; Varsity Club 1, 2; Student Council 2, 4; Football 1, 2, 4; Basketball 1, 2, 3; Baseball 1, 2, 4; Manager 4; Letterman's Club 4; Senior Class President.



**ELEANORE LAMBRECHT**

Never say too much, never get in dutch.

F. H. A. 1, 2, 3, 4; Glee Club 4; Chorus 1, 2; Forensics 1, 2, 3, 4; G. A. A. 1, 2, 3, 4; Pep Club 4; Teachers' Secretary 4; Ane Act Plays 1, 2; Newspaper Staff 4; Annual Staff 4.



**COLLEEN KELLY**

Did you ever see Colleen sad or blue? We never have and we're observant, too!

Debate 3, 4; Forensics 1, 2, 3, 4; One Act Play 1; Chorus 1, 2; Glee Club 2, 3; Band 1, 2; Annual 4.



**ROSELEYE LE BARRON**

A little romance now and then is relished by the best of women.

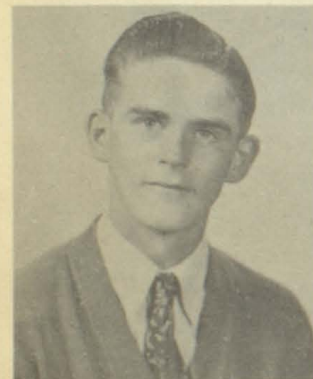
Ensemble 4; Annual Staff 4; Cheerleader 4; Glee Club 4; Class Treas. 4; F. H. A. 4; G. A. A. 3, 4; Pep Club 4; Newspaper Staff 4; Transferred from Duluth 3.



**ARLEN KIRKHAM**

I never let books interfere with my education.

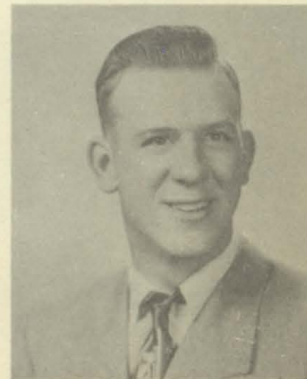
F. F. A. 1, 2, 3, 4; F. F. A. Basketball 3, 4.



**GORDON LUEDTKE**

We all know that Gordie's shy, but still we think that he's quite a guy.

Football 1, 2, 3, 4; Baseball 3, 4; Letterman 3, 4.



**GARY KLING**

He sure is a big he-man: He must eat spinach by the can.

Football 1, 2, 3, 4; Basketball 1, 2, 3, 4; Track 2, 4; Baseball 2, 3, 4; Chorus 2; Class Officer 3, 4; Letterman's Club 2, 3, 4; One Act Plays 1, 2; Class Play 3; Student Council 1, 4; Librarian 4; Newspaper Staff 2, 3, 4; Annual Staff 4; Pep Club 4.



**DEAN MILLER**

Dean knows that the football field isn't the only place for a line.

Football 1, 2, 3, 4; Basketball 1, 2, 3, 4; Baseball 1, 2, 3, 4; Track 2, 4; Class Play 3; One Act Plays 1, 2, 3; Chorus 2; Letterman's Club 4; Class Officer 2, 3; Dance Orchestra 4; Newspaper Staff 2, 3, 4; Annual Staff 4; Projector 3, 4; Pep Club 4.



# SENIORS



**GERALD RAETHER**

He had no use for books or fame, a mere diploma was his aim.

F. H. A. 1, 2, 3, 4; F. F. A. Basketball 3, 4; Baseball 3, 4.

**ADELINE RICHARDS**

She's shy in school, but . . . . . ?

Girls Glee Club 1; F. H. A. 1, 2, 3, 4; Transferred from Osseo 2.



**BEULAH RAETHER**

I love him when he's near; but when he's gone, there are others just as dear.

Chorus 1, 2; F. H. A. 3; Teacher's Secretary 4.

**LOWELL RODD**

Shorty, shorty five foot four, aren't I gonna grow no more?

Chorus 1, 2; F. F. A. 1, 2, 3.



**JEAN RAETHER**

She knows them all from out of town, she's one senior who gets around.

F. H. A. 1, 2, 3, 4; G. A. A. 3, 4; Chorus 1, 2; Pep Club 4; Annual Staff 4; Teacher's Secretary 4; Glee Club 3, 4.

**JOHN ROSENTRER**

There are three great men in the world; myself, and I forgot the other two.

Football 1, 2, 3; Basketball 1, 2; Track 1, 2; Manager 4; Letterman's Club 4; Demolay 1, 2, 3; Ski Club 3; Inner Class Basketball 3; Swimming 2, 3; Athletic Club 3; National Guard 2, 3; Art Club 2; Transferred from Laramie, Wyoming 4.



**DOROTHY RAHL**

The Army's O. K., the Navy's swell, but oh! those Marinies.

F. H. A. 1, 2, 3, 4; Chorus 1, 2; G. A. A. 1.

**EILEEN ROTH**

Here's a maiden without pretense, blessed with good reason and common sense.

F. H. A. 1, 3, 4; Chorus 1, 2; Glee Club 3, 4.



**MARLENE RAHL**

By her friends she's highly rated; like Chase and Sanborn, always dated.

G. A. A. 1, 2, 3, 4; F. H. A. 4; Glee Club 3, 4; Chorus 1, 2; Forensics 1, 4; Ensemble 2, 3, 4; Pep Club 4; One Act Play 1.

**ALAYNE RUSSELL**

I can't decide whether to be queen of a home, or to teach.

F. H. A. 1, 2, 3, 4; G. A. A. 3, 4; Band 2, 3, 4; Chorus 1; Forensics 1, 2, 3, 4; Debate 4; Annual Staff 4; One Act Play 2; Class Play 3; Library Council 4.



# SENIORS

ROSELLA SCHALINSKE

I don't say much but I do a lot of thinking.

F. H. A. 1, 3, 4; Teacher's Secretary 4.

ELMIRA TUMM

To be efficient in a quiet way; that is my aim throughout the day.

F. H. A. 1, 2, 3, 4; Teacher's Secretary 4; Office 4.

JOHN SCHEDLER

He's like an open book; he says what he thinks.

Transferred from Merrill 3; Band 3, 4; Pep Band 3, 4; Baseball 3, 4; Class Play 3; German Band 4; Annual Staff 4.

DORIS WANGEN

She's the kind you'd like to meet, always quiet, always neat.

Chorus 1, 2; F. H. A. 1, 3, 4.

FAITHANN SHEFCHIK

Fords make ideal pals.

G. A. A. 1, 2, 3, 4; F. H. A. 4; Ensemble 4; Glee Club 1, 2, 3, 4; Chorus 1, 2; Annual Staff 4; Class Play 3; Forensics 1, 2, 3, 4; Pep Club 4.

MARGARET WILKINSON

Always happy, my wants are few— Lots of clothes, and a car so new. Chorus 1; Band 1, 2; Office 4; Teacher's Secretary 4.

KENNETH SHONG

"Ken" will go far with his good looks and car.

Football 1, 2, 3, 4; Basketball 1, 2, 3, 4; Baseball 3, 4; Class Offices 1, 2, 3; Lettermen's Club 3, 4; One Act Play 1; Class play 3; Student Council 4; Librarian 4; Newspaper Staff 3, 4; Annual Staff 4; Pep Club 4; F. F. A. 1, 4.

HOWARD WOLFGANG

Oh to be a gentleman farmer and raise nothing but my hat!

F. F. A. 1, 2, 3, 4; F. F. A. Basketball 3; Chorus 1, 2;

MARILYN STUBBE

And still we gazed and still our wonder grew, how one small head carried all she knew.

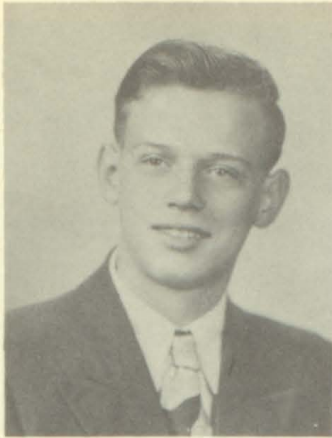
Band 2, 3, 4; Chorus 1, 3, 4; Ensemble 4; F. H. A. 1, 4; Forensics 1, 2, 3, 4; Debate 3; News Staff 3, 4; Editor 4; Annual Staff 4; Pep Band 4; German Band 4; Union Reporter 3, 4; Office 4; Teacher's Secretary 4; Class Play 3; Vice-President 2, 3; One Act Play Director 2.

LOIS WOLFGANG

She's as likeable as she is lookable.

F. H. A. 1, 4; G. A. A. 2, 3, 4; News Staff 2, 3, 4; Annual Staff 4; Glee Club 1, 2, 3, 4; Library Council 4; Forensics 3, 4; Pep Club 4.





ALVIN ZILLMER

He's always feeling at his best; when he can be a constant pest.

Basketball 1, 2, 3, 4; Baseball 3, 4; Class Play 3; News Staff 4.

KENNETH ZELL

He's small but great things ain't always done by the tall.

F. F. A. 1, 2, 3, 4; F. F. A. Basketball 1, 3, 4; Baseball 3, 4.



CLASS OFFICERS

Roseeye Le Barron, Treasurer  
 Fred Kawell, President  
 Gary Kling, Vice-President  
 Margaret Donnelly, Secretary

COMMENCEMENT DAY — MAY 25



HONOR STUDENTS

Marilyn Stubbe, Valedictorian  
 Margaret Donnelly, Salutatorian

CLASS MOTTO

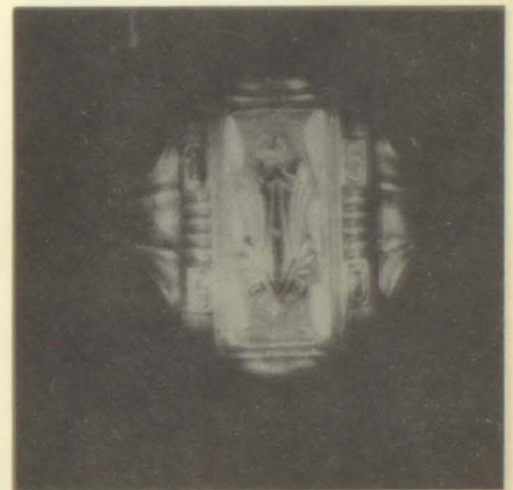
"SWEET ARE THE REWARDS OF HONEST EFFORT."



ANNUAL

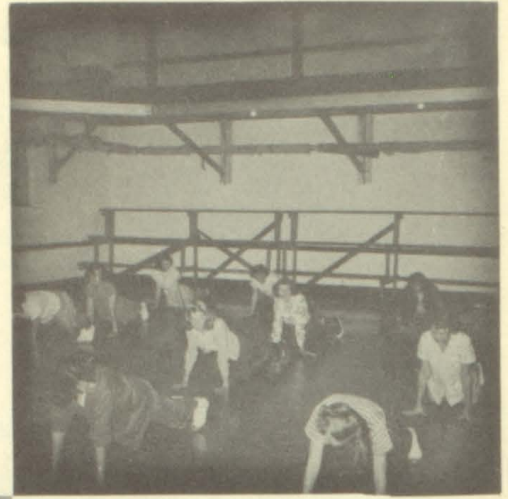
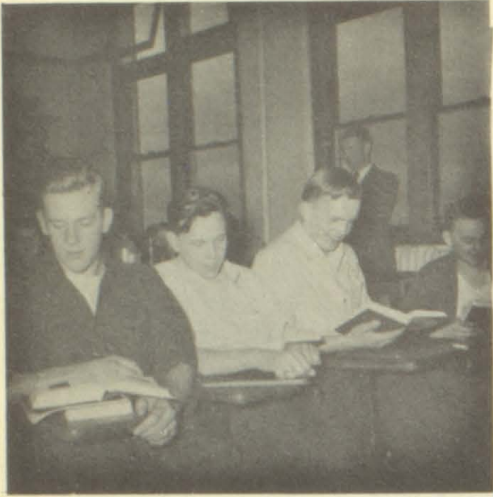
Editor of Annual Bill Goede  
 Co-Editor Margaret Donnelly

CLASS FLOWER — WHITE ROSE



CLASS RINGS

CLASS COLORS — MAROON AND GRAY



# CLASSES

# JUNIORS



Row one: M. Rodd, B. McCune, R. Gorka, D. Schultz, J. Wolfgang, V. Barka, E. Zillmer.  
 Row two: E. Knitter, A. Sperber, D. Daniels, M. Johnson, C. Henning, S. Kuhnert, L. Dehnke, B. Lange, B. Ida, L. Pettis, B. Frueh.  
 Row three: Mr. Hudson, E. Minert, C. Magnussen, A. Cookley, A. Hanson, J. Lone, C. Wright, V. Troxel, C. Magnussen, V. Searles, J. Ida, B. Funk, L. Zillmer, D. Rose.  
 Row four: W. Linder, R. Kot, E. Stenson, C. Miller, E. Thoede, G. Staats, R. Berry, D. Hulbert, C. Gillo, J. Bann, B. Welke, A. Biegel, B. Raether, L. Lighthizer, D. Carlson, R. Kunz.

## CLASS OFFICERS

"We're over the hill" is the unofficial motto of the Class of '51, for now as they enter the home stretch they can see that cap and gown just running to meet them.

Yes, those three years this class of some 50 students have been so eager to complete are now nearly over and soon they will be moving their belongings to the northern, most revered section of the Senior Assembly to take the place or at least attempt to take the place of the Class of '50. The junior year is by tradition the busiest, as the juniors themselves have no doubt discovered as they worked on their play **NO PLACE TO PARK**, and on their prom, **Blue Moon**.

Three juniors, Gene Staats, Don Rose, Dave Hulbert, saw a lot of action on the basketball floor, while Arlene Hanson their cheerleading class mate' rooted' for them.

To the Class of '51 we extend the wish that their Senior year may be as successful as their junior year has been.



President—Charles Gillo  
 Vice President—Betty Marie Lange  
 Secretary—Emil Thode  
 Treasurer—Art Biegel

# SOPHOMORES



Row one: R. Bartlett, D. Ritter, D. Reineke, E. Gorka, B. Schara, D. Haldeman, G. Zank, D. Schwoch, E. Schroeder.  
 Row two: C. Colby, V. Alix, J. Johnson, M. Dobrenz, M. Shefchik, B. Newton, D. Hall, B. Zink, A. Ringhand, M. DuRocher, D. Anderson, A. Erdman, S. Helgerson.  
 Row three: C. Shong, V. Frueh, M. Erickson, D. Johnson, V. Weise, C. Schedler, J. Tumm, L. Henke, G. Jaskowski, C. Swatzina, R. Smith, B. Raether, E. Jaenke, R. Haskins, A. Roths, J. Johnson, M. Warner, D. Ball.  
 Row four: J. Reineke, M. Kirkham, R. Warner, L. Zillmer, L. Ayers, B. Schroeder, W. Shong, B. Gregor, R. Stienke, Mr. Robertson, L. Tumm, V. Hadorn, Z. Lowmon, D. Bauch, G. Warner, F. Kuehn, G. Rahl, J. Nelson, H. Zebarth, L. Erdman.

## CLASS OFFICERS



President—Dale Bauch  
 Vice-President—Bob Schara  
 Secretary—Barbara Newton  
 Treasurer—Joyce Nelson

"The class by the windows" has an unusually large number of students represented in the various organizations considering that they have only been in high school for two years and are just sophomores. For instance, two of the cheerleaders, Marilyn Shefchik and Barbara Newton, and all of twirlers and the majorette are from this class. Membership in athletics has interested many sophomores and we find such sophomores as Zane Lowman, Wayne Shong, and Gordie Zank doing a fine job. The traditional Christmas play was again a product of sophomore initiative and perhaps we can consider it a prediction of who will be the future dramatic stars in this fast-moving class of some sixty members. We shall be looking forward to their achievements during their next two years!

# FRESHMEN



Row one: J. Kelly, K. Schultz, P. Miller, J. DuRocher, G. Gunderson, M. Holst, B. Lange, G. Marion, D. Russell.

Row two: J. McCune, A. Stienke, D. Johnson, E. Johnson, B. Raether, S. Miller, C. Raether, G. Jaenke, A. West, J. Bauch, N. Schroeder, E. Draeger, J. Stensen.

Row three: F. Witte, J. Shong, I. Lange, B. Staats, E. Sperber, A. Roberts, A. Albrecht, R. Ringhand, B. Gregor, D. Pettis, M. Kuehn, D. Lange, M. Trumph, E. Brunzlick, Y. Rahl, M. Kaiser, D. Pilgrim.

Row four: Mr. Lehman, E. West, N. Ayers, R. Powell, C. Raether, V. Henning, E. Gorka, D. Senske, H. Kling, G. Poirier, F. Raether, B. Watenphul, D. Volbrecht, R. Smith, N. Dickinsen, M. Zook, M. Rahl.

## CLASS OFFICERS



President — Audrey Roberts  
 Vice-President — Richard Ringhand  
 Secretary — Jean McCune  
 Treasurer — Natlie Schroeder

On September 6, 1949 a large group of young people from Augusta and thereabouts came to Augusta High School to begin what we predict will be four of the happiest years of their life.

After initiation the freshmen were quickly accepted in many activities. For example, Howard Kling, a freshman, made the A team in basketball and saw action in many of the games. Football attracted many freshmen, whom are showing promise as the possible nucleus of the future champs. Music too, interests many freshmen; while still others show possibilities as future orators and debaters.

The class of '53 chose students who participate in many activities to represent them as their class officers.

Yes! The class of '53 bears watching and watch it we will.

# EIGHTH GRADE



Row one: R. Ramsey, M. Frueh, K. Daniels, G. Wiese, A. Wesenberg, G. Schedler.

Row two: P. Murkovich, D. Balliett, F. Lambrecht, E. Zillmer, M. McCune.

Row three: Mr. Lynch, D. Herrick, D. Reineke, D. Bartlett, E. Ringhand, N. Henning, R. McCord.

# SEVENTH GRADE



Row one: J. Erdman, P. Thompson, J. Livermore, R. Shong, J. Goede, M. Anderson, R. Scott, M. Reetz, B. Keberlein.

Row two: W. Schwoch, B. Ziebarth, A. Gregor, F. Berry, S. Kling, G. Moland, M. Zank, S. Warner, M. Reineke, D. Rucks.

Row three: I. Lipke, J. Sperber, W. DuRocher, A. Roberts, J. Thompson, D. Lawson, D. Rudolph, A. Sperber, E. Henning, J. Jacobson

# SIXTH GRADE



Row one: J. Solie, B. Threw, C. Reineke, M. Zebarth, S. Zook, K. Bartlett, D. Shong, M. Rahl, D. Zank.

Row two: S. Loibl, S. Scott, L. Kuehl, K. Bechtel, N. Daniels, D. Olson, E. Zank, H. Bauer, Y. McCord, Miss Hessel.

Row three: L. Rucks, H. Cole, B. Ringhand, D. Behrens, J. Boettcher, J. Graham, J. Korth, W. Kuckenbecker, J. Ziehr.

# FIFTH GRADE



Row one: S. Bauch, G. Herrick, R. Rugotzke, M. Redman, D. Hatch, R. Zank.

Row two: M. Reetz, J. Hawke, L. Reetz, A. Sperber, K. Scott.

Row three: J. Almos, D. Lone, N. Ayers, B. Halvorson, F. Thompson, J. Crandall.

# FOURTH GRADE



Row one: A. Shong, J. Almos, C. Stevens, K. Miller, G. Slifer, J. Randall, L. Horel, D. Schwoch, T. Scott.

Row two: Mrs. Hardesty, J. Henning, L. Rucks, W. Bann, M. Cook, B. Graham, J. Behrens, R. Bann, D. Gregor, L. Scott.

Row three: R. Arries, S. Hulbert, D. Stillman, M. Justesen, M. Moland, G. Reineke, W. Balliett, J. Anderson, D. Boettcher.

# THIRD GRADE



Row one: B. Miller, G. Bucholz, K. Setzer, R. Henning, S. Ringhand, R. Wilkinson, D. Arries, G. Gilbertson, R. Schroeder.

Row two: L. Bauch, M. Sperber, J. McCord, M. Colvin, J. Lone, N. Colvin, R. Balliett, B. Höff, M. Daniels.

Row three: L. Lambrecht, J. Moldenhauer, S. Anger, K. Schiefelbein, S. Seif, P. Ayers, E. Brook, H. Almos, T. Rugotzke, Miss Stepler.

Not pictured: J. Zank, S. Osborn, T. Roberts, M. Ramsey, L. Richards.

# SECOND GRADE



Row one: W. Keberlein, K. Piel, W. Crandall, S. Bucholz, J. Zank, K. Bauch, S. Almos, S. Thon, J. Slifer

Row two: M. Rahl, J. Balliett, T. Ziehr, R. Halvorson, C. Boetcher, S. Johnson, S. Kuehl, D. Balliett, C. Daniels.

Row three: L. Reineke, J. Setzer, L. Stillman, D. Erdman, L. Balliett, R. Wilkinson, M. Canon, J. Sieg, S. Rahl, D. Randall, Mrs. Witte.

Not on picture: N. Dobrenz, J. Boetcher, T. Korth, V. Lambrecht, L. Pope.

# FIRST GRADE



Row one: J. Stevens, G. Schiefelbein, N. Balliett, R. Bergerson, Richard Bergerson, D. Bauch,, H. Schwach, B. Zillmer.

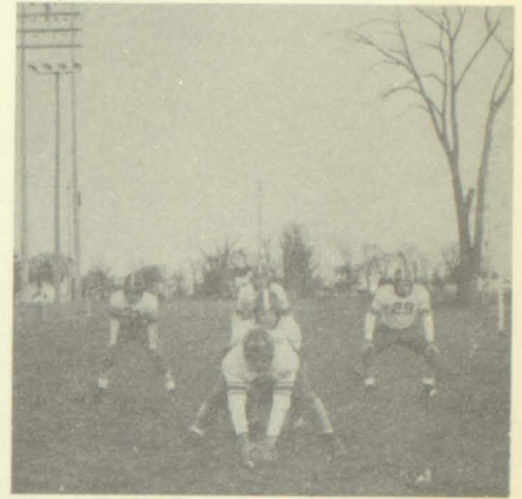
Row two: J. Hulbert, M. Ziehr, E. Gregor, J. Kling, K. Brooke, M. Graham, J. Trumph, M. Lipke.

Row three: D. Burger, D. Rugotzke, J. Scott, C. Scott, V. Rucks, D. Shong, A. Straschinske, C. Bechtel, D. Reineke, Mrs. Humke.

Not on picture: L. Richards.

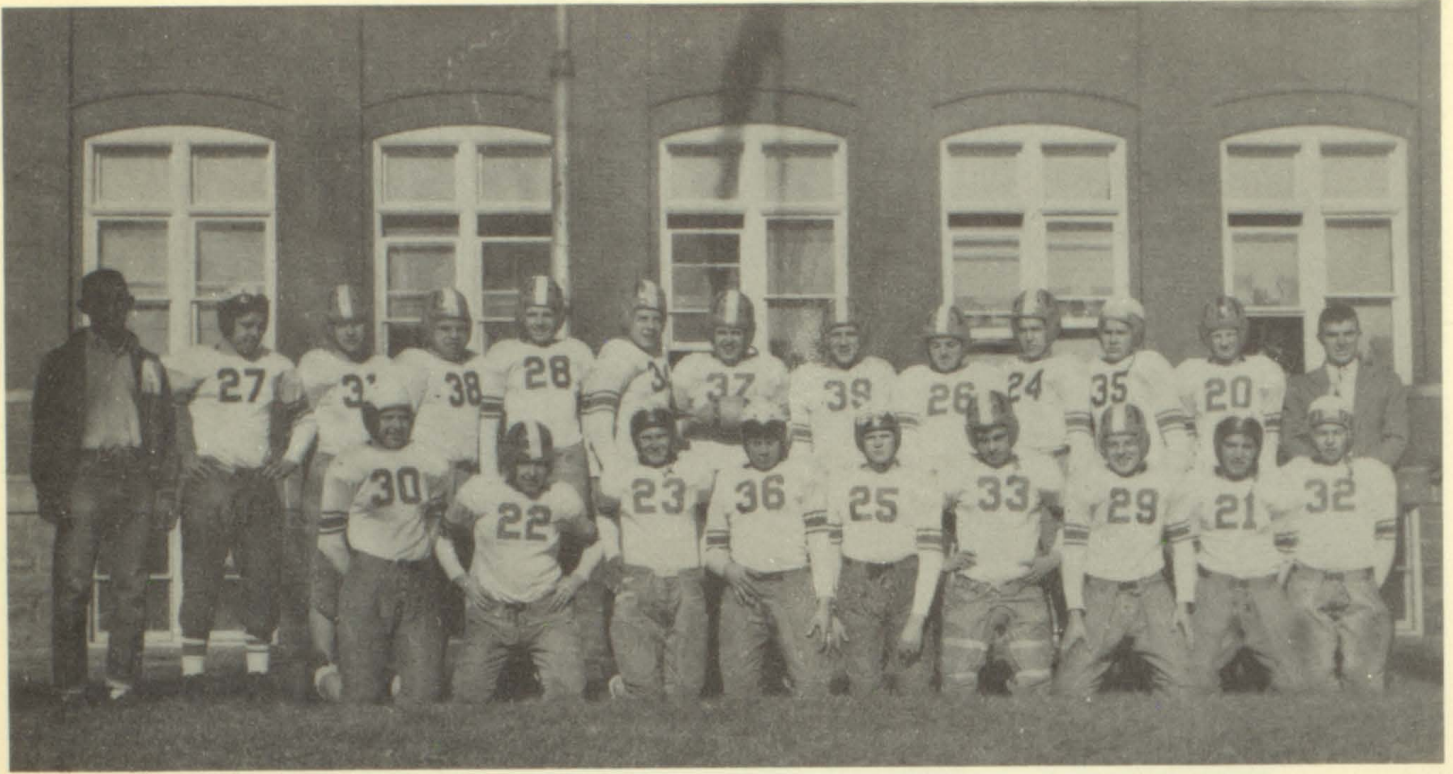


# • SPORTS •



## CO-CHAMP

# FOOTBALL



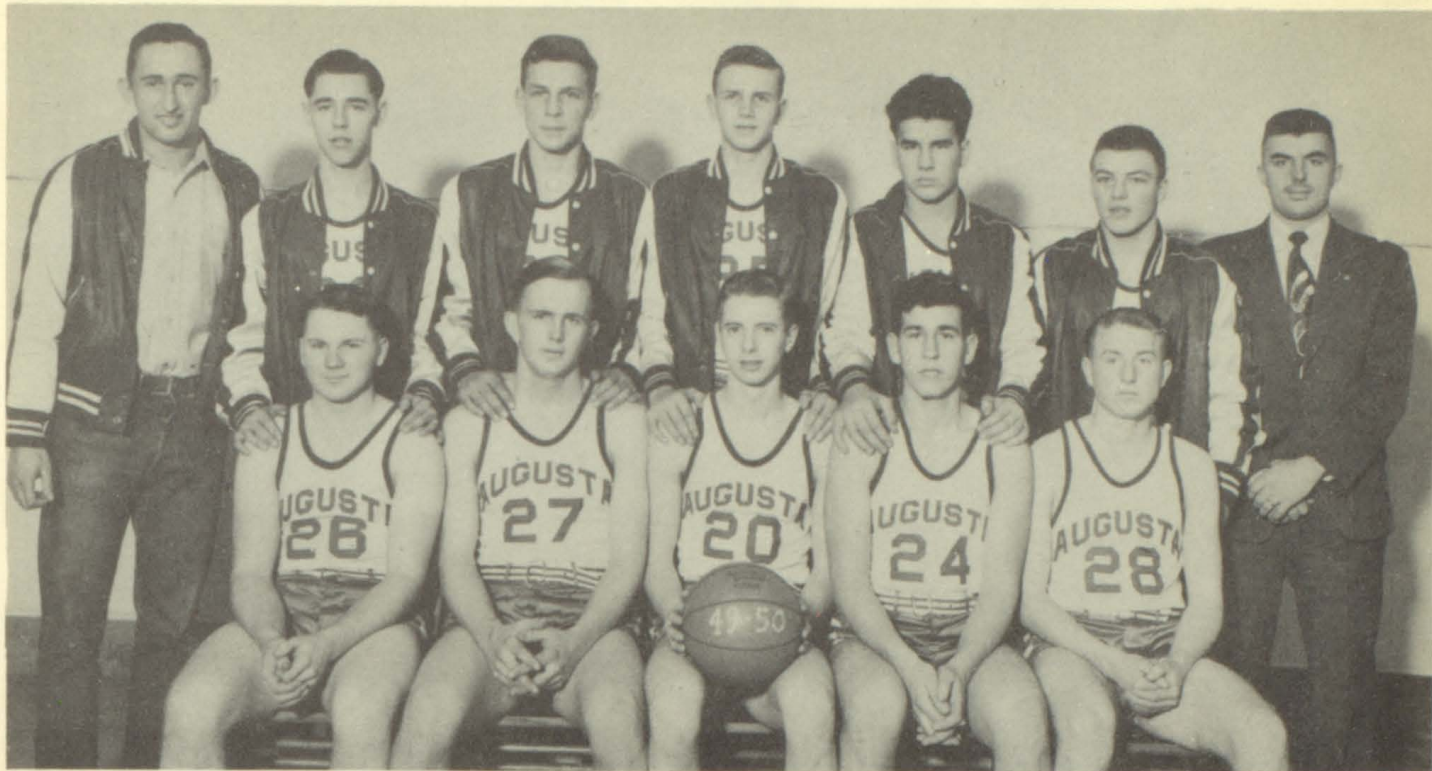
Row one: R. Berry, G. Staats, C. Magnussen, A. Biegel, B. Funk, F. Kawell, D. Miller, D. Schultz, G. Zank.  
 Row two: J. Rosentreter, mgr., C. Berry, Z. Lowman, B. Welke, H. Kling, C. Gillo, G. Kling, G. Luedtke, C. Miller, K. Shong, W. Shong, F. Kuehn, Mr. Haas.

## SCOREBOARD

Augusta—6	Thorp—19
Augusta—7	Arcadia—21
Augusta—6	Mondovi—33
Augusta—6	Durand—6
Augusta—12	Galesville—6
Augusta—7	Whitehall—6
Augusta—19	Black River Falls—20



# "A" TEAM BASKETBALL



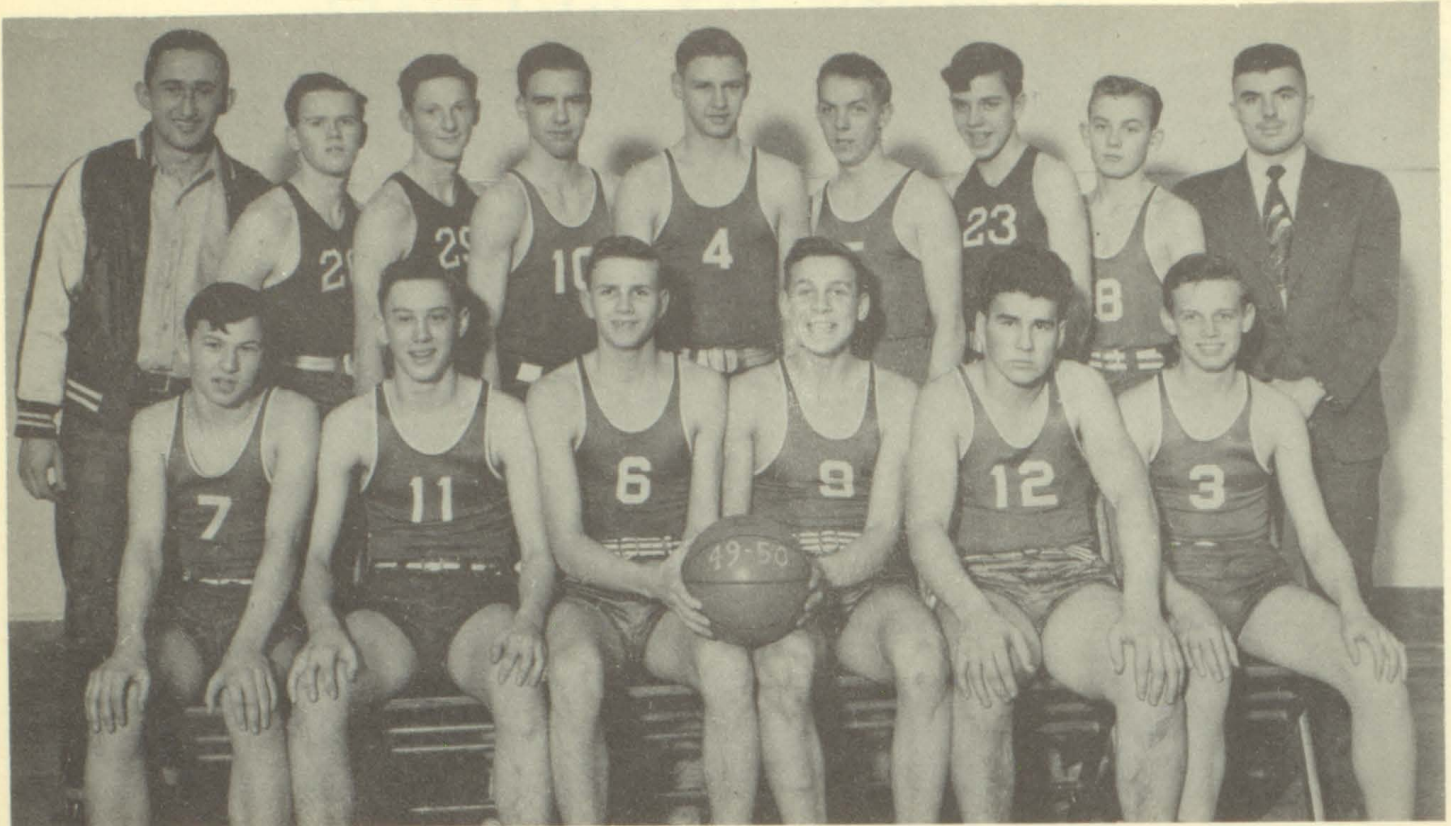
Row one: D. Rose, G. Kling, D. Hulbert, K. Shong, G. Staats.  
 Row two: J. Rosentreter, Mgr., B. Goede, C. Gillo, H. Kling, W. Shong, D. Miller, Mr. Hass.

## SCOREBOARD

Augusta—45	Neillsville—34	Augusta—64	Stanley—60
Augusta—32	Arcadia—35	Augusta—45	Osseo—53
Augusta—46	Osseo—44	Augusta—48	Altoona—59
Augusta—44	Mondovi—35	Augusta—52	Mondovi—48
Augusta—51	Black River Falls—34	Augusta—59	Black River Falls—33
Augusta—33	Thorp—48	Augusta—43	Durand—40
Augusta—41	Durand—35	Augusta—40	Whitehall—39
Augusta—33	St. Patrick's—58	Augusta—39	Thorp—54
Augusta—63	Whitehall—46	Augusta—43	Stanley—57
Augusta—42	Arcadia—39		



# "B" TEAM BASKETBALL



Row one: G. Zank, B. Schroeder, H. Kling, C. Gillo, W. Shong, A. Zillmer.

Row two: J. Rosentrater, B. Funk, F. Kuehn C. Berry, R. Berry, L. Lightizer, G. Warner, N. Dickenson, Coach Haas.



## JUNIOR HIGH FOOTBALL

Row one: P. Hanson, J. Livermore, P. Miller, W. DuRocher, F. Berry.

Row two: D. Reineke, A. Albrecht, D. Lawson, A. Rahl, D. Rudolph.

Row three: Mr. Lynch, N. Dickenson, B. Watenphul, D. Bartlett, H. Kling, J. DuRocher, D. Pettis, D. Russell.

## JUNIOR HIGH BASKETBALL

Row one: F. Berry, D. Rudolph, D. Bartlett, D. Reineke, W. DuRocher, M. Anderson.

Row two: Mr. Haas, P. Thompson, R. Shong, K. Daniels, E. Ringhand, D. Lawson, D. Rucks, J. Livermore.



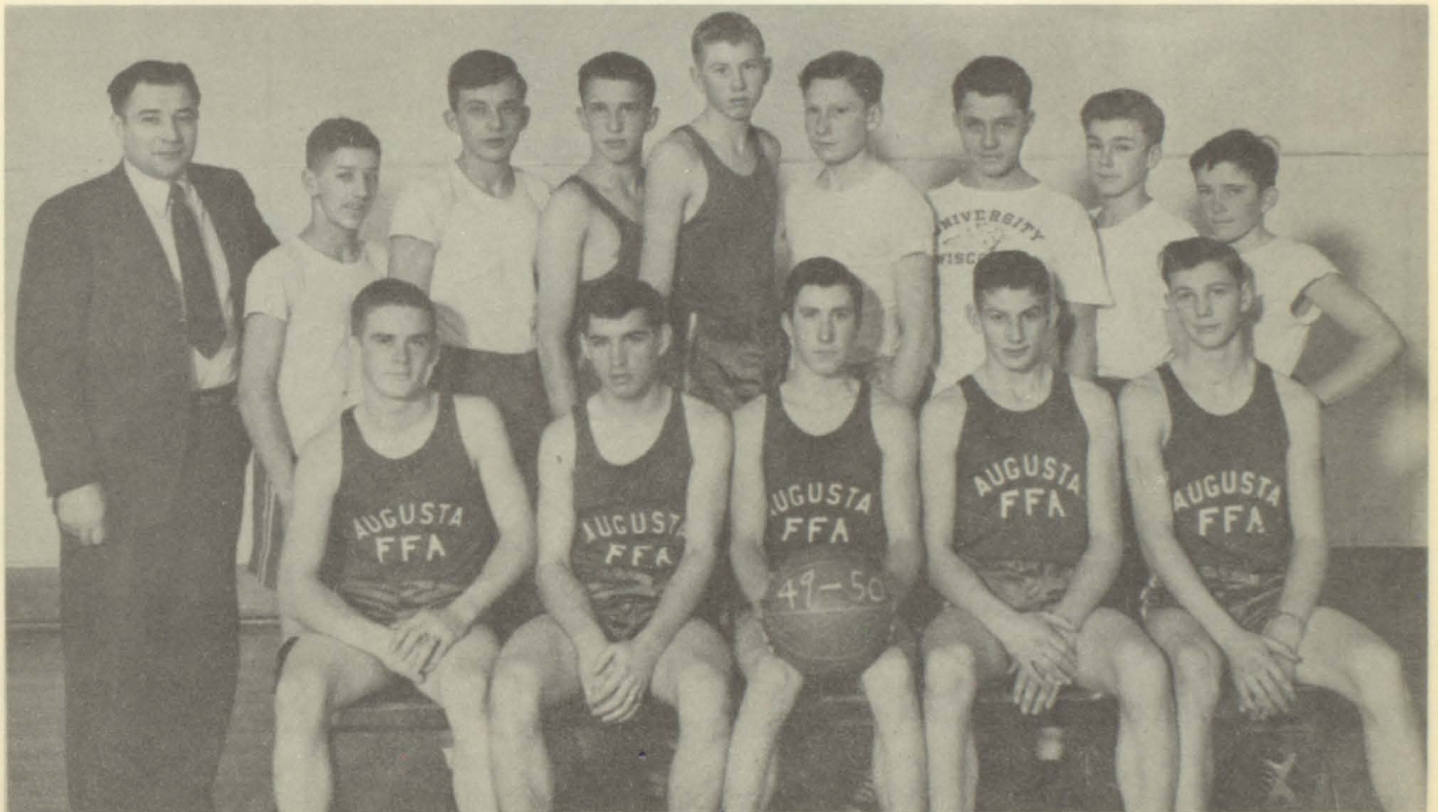
# LETTERMEN'S CLUB



Row one: C. Berry, G. Zank, G. Staats, G. Luedtke, K. Shong, D. Rose, D. Miller, B. Welke, G. Kling.

Row two: Mr. Hull, Mr. Bichler, B. Goede, J. Rosentreter, B. Schroeder, D. Hulbert, C. Gillo, F. Kawell, Mr. Lynch, Coach Haas.

# F. F. A. BASKETBALL

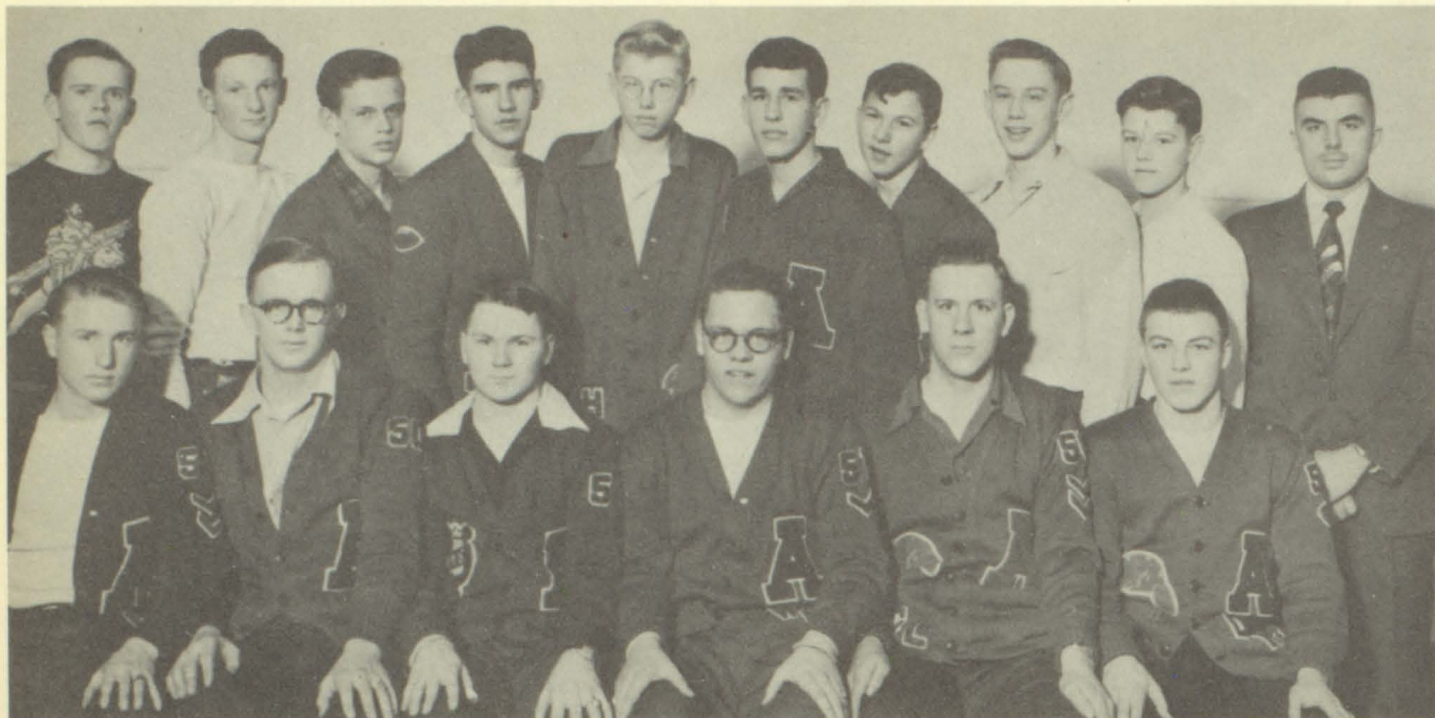


Row one: A. Kirkham, D. Schultz, K. Zell, E. Stensen, L. Ayres.

Row two: Mr. Hull, K. Schultz, R. Kot, F. Raether, V. Hadorn, B. Watenphul, J. Ida, D. Russell, J. Kelly.

The F. F. A. had a fair team this year. They were very good on defense and fair on offense. The boys on the F. F. A. team co-operated beautifully and showed much respect for the opposing teams. They had a small team but they really got the ball around.

# BASEBALL



Row one: G. Staats, G. Kling, D. Rose, W. Welke, G. Luedtke, D. Miller.

Row two: B. Funk, F. Kuehn, A. Zillmer, Z Lowman, V. Hadorn, K. Shong, G. Zank, B. Schroeder, D. Haldeman, Coach Haas.

# G. A. A.



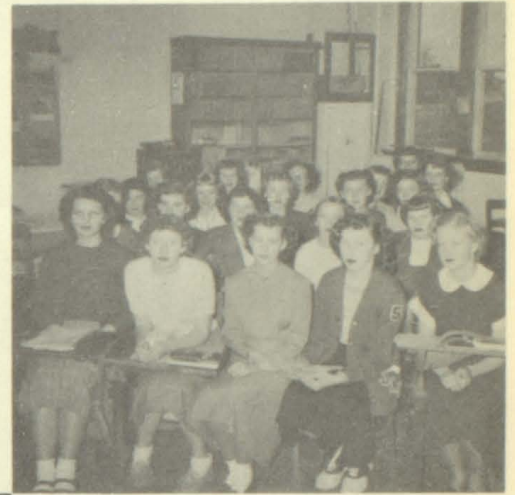
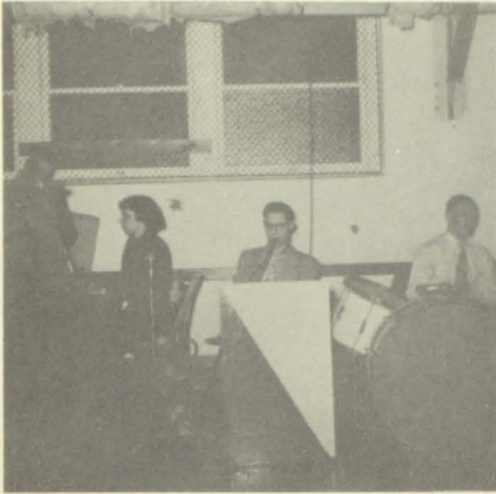
Row one: Sec. M. Houn, Pres. Alayne Russell, Treas. Gail Erdman, Vice Pres. Ruth Hadorn

Row two: M. Shefchik, N. Schroeder, E. Lambrecht, M. DuRocher, J. Shong, B. Raether, E. Knitter, J. Bauch, D. Johnson, M. Dobrenz, R. La Barron, A. Richards, D. Douglas.

Row three: J. McCune, A. Sperber, D. Hall, H. Zebarth, D. Daniels, J. Kubera, J. Herrick, B. Staats, C. Schedler, D. Johnson, V. Wiese, J. Johnson, A. Ringhand, Y. Rahl, B. Bartlett, E. Haskins, A. West, L. Pettis, J. Reineke, C. Shong.

Row four: Miss Achterkirch, B. Newton, A. Roths, L. Henke, L. Wolfgang, D. Brunzlick, A. Boettcher, C. Raether, J. Jones, M. Triumph, A. Hanson, B. Raether, C. Wright, V. Troxel, A. Roberts, P. Hanson, M. Rahl, A. Coakley, J. Raether, F. Shefchik, E. Sperber, E. Brunzlick, S. Helgerson.

# • SOCIAL •



# • SWING •

# FIRST BAND



Row one: B. Lange, D. Johnson, D. Hall, J. Johnson, E. Haskins, A. Roberts, C. Wright, R. Haskins, M. Donnelly, D. Rose.

Row two: A. Russell, J. Goede, S. Kling, D. Rudolph, V. Troxel, M. Stubbe, J. Kubera, G. Schedler, B. Newton, A. Ringhand, D. Ball, J. Jacobson, M. Shefchik, B. Goede, R. Ramsey.

Row three: A. Sperber, D. Johnson, D. Balliett, M. Warner, P. Christianson, A. Roberts, P. Hanson, B. Staats, R. Ringhand, D. Lawson, Mr. Culp, E. Brunzlick, M. Kirkham, D. Senske, M. Anderson, B. Ida, E. Ringhand, G. Jaskowski, J. Schedler.

## TWIRLERS



DeLoris Johnson, Joanne Johnson, Alice Ringhand, Marilyn Shefchik, Barbara Newton.



MR. R. CULP



# JR. BAND



Row one: S. Scott, B. Zebarth, Y. McCord, K. Shultz, J. Korth, B. Ringhand, W. Kuchenbecker, J. Hawk.

Row two: D. Pilgrim, J. Stinsen, P. Thompson, S. Schedler, B. Keberlein, D. Russell, F. Berry, E. Zank, B. Raether, D. Behrens, N. Daniels, S. Loibl, E. Draeger.

Row three: D. Rucks, J. Reineke, J. Sperber, J. Graham, Mr. Culp, M. Reineke, E. Sperber, M. Kaiser, J. Bauch.

# GERMAN BAND



Row one: E. Haskins, M. Stubbe, J. Kubera, E. Brunzlick, M. Kirkham, P. Christianson, A. Roberts, B. Staats, A. Ringhand, J. Schedler.

Row two: A. Russell, B. Lange, D. Hall, J. Johnson, D. Johnson, D. Senske, B. Welke, J. Goede, G. Jaskowski, D. Ball, R. Haskins, D. Rose.

# ENSEMBLE



Row one: R. LeBarron, M. Shefchik, B. Newton, J. Johnson, A. Roth, D. Johnson, D. Hall, M. Stubbe, A. Ringhand, F. Shefchik, M. Rahl, Mr. Culp.

Row two: K. Eaton, D. Brunzlick, V. Wiese, C. Wright, G. Erdman, J. Herrick, B. Bartlett, M. Houn, C. Schedler, J. Kubera, J. Jones, M. Donnelly, P. Hanson.

# GLEE CLUB



Row one: M. Houn, C. Shong, A. Roth, B. Bartlett, M. Shefchik, R. LeBarron, Mr. Culp, M. Donnelly, M. Warner, E. Lambrecht, D. Douglas, A. Erdman, A. Ringhand.

Row two: D. Hall, J. Herrick, B. Bartlett, L. Dehnke, B. Ida, J. Kubera, H. Zearth, C. Schedler, D. Johnson, V. Wiese, J. Johnson, A. Steinke, M. Erickson, L. Pettis, A. Sperber, J. Reineke, M. Stubbe, S. Helgerson, J. McCune.

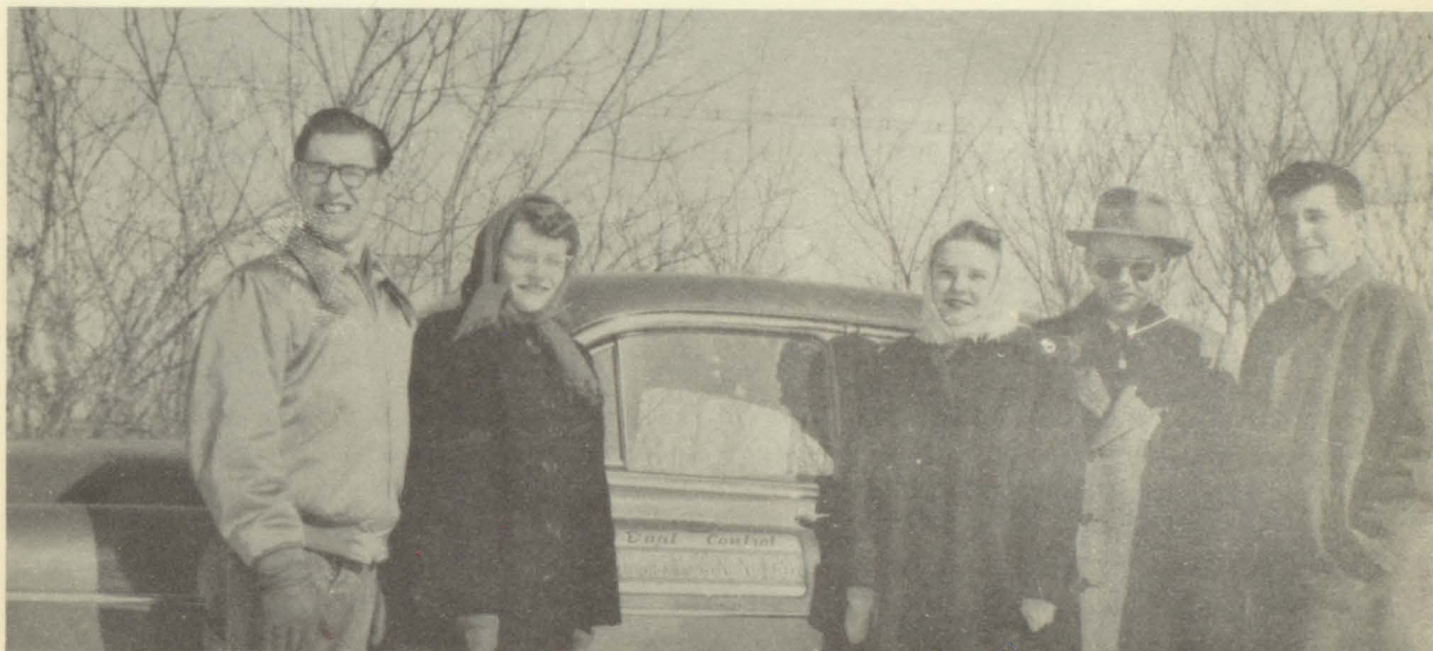
Row three: A. Coakley, J. Jones, L. Wolfgang, D. Brunzlick, M. Triumph, B. Staats, A. Roberts, G. Erdman, C. Magnussen, C. Swatzina, C. Wright, G. Jaskowski, B. Raether, M. Rahl, J. Raether, E. Sperber, E. Brunzlick, F. Shefchik, Y. Rahl.

## RED CROSS



This year the senior girls taking Home Economics have been learning the many phases of home nursing. Miss Reavley, the county school nurse, has been instructing the Red Cross Home Nursing Course. The course proved very interesting because there was very little studying and a lot of practical experience. This picture shows the girls practicing methods of caring for a patient in the home.

## DRIVER TRAINING



Although some of the townspeople were more than a little skeptical about teaching students how to drive, it was only a very short time until the shiny new Chev. with junior or senior students at the wheel and Mr. Daumitz on the dual control became an accepted sight on the city streets.

The course included classroom instruction as well as behind-the-wheel training. About seventy students were already licensed drivers while several obtained their licenses as a result of the course.

# DRIVER TRAINING



## DRIVERS TRAINING - - NON-LICENSE

Row one: M. Stubbe, D. Douglas, E. Lambrecht, E. Tumm, R. LeBarron, B. Bartlett, D. Green, A. Richards, D. Wangen.

Row two: Mr. Daumitz, F. Shefchik, D. Brunzlick, A. Boettcher, J. Wolfgang, J. Raether, L. Rodd, J. Jones, L. Wolfgang, E. Roth.

Row three: M. Rodd, D. Rose, C. Magnussen, D. Rahl, G. Luedtke, G. Raether, G. Erdman, A. Zillmer, V. Searles, P. Boettcher.



## DRIVERS TRAINING - - LICENSE

Row one: C. Kelly, A. Russell, J. Kubera, J. Herrick, M. Houn, P. Hanson, M. Rahl, E. Haskins, R. Hadorn, M. Wilkinson, K. Eaton.

Row two: Mr. Daumitz, D. Shultz, K. Zell, R. Kunz, C. Miller, B. Goede, C. Berry, A. Biegel, F. Kawell, R. Kot, D. Miller, D. Carlson.

Row three: R. Gorka, B. Raether, G. Kling, H. Donner, P. Christianson, D. Hulbert, C. Gillo, B. Johnson, K. Shong, J. Rosentreter, B. Welke, R. McCune.

# PEP BAND



Row one: A. Russell, R. Ramsay.

Row two: D. Johnson, D. Hall, J. Johnson, E. Haskins, M. Donnelly, R. Haskins, R. Ringhand, P. Christianson, A. Roberts, B. Staats, D. Lawson.

Row three: J. Jacobson, D. Ball, A. Ringhand, M. Stubbe, J. Kubera, E. Brunzlick, P. Hanson, M. Kirkham, Mr. Culp, J. Schedler, G. Jaskowski, E. Ringhand, B. Ida, M. Anderson.

# PEP CLUB



Row one: R. LeBarron, A. Hanson, M. Shefchik, B. Newton.

Row two: E. Lambrecht, D. Johnson, J. Bauch, H. Zebarth, J. Shong, J. Herrick, A. Roth, V. Weise, D. Johnson, J. Johnson, F. Shefchik, D. Hall, G. Lange, N. Schroeder, D. Douglas.

Row three: D. Pilgrim, M. Kaiser, B. Staats, M. Houn, D. Brunzlick, E. Brunzlick, M. Trumph, E. Sperber, A. Roberts, C. Wright, P. Hanson, G. Erdman, R. Hadorn, J. Raether, A. Russell, Y. Rahl, L. Dehnke, S. Helgerson.

Row four: C. Schedler, N. Dickinson, F. Kowell, A. Biegel, B. Goede, B. Welke, G. Luedtke, K. Shong, H. Kling, G. Kling, J. Rosewreter, Z. Lowman, C. Berry, B. Schroeder, G. Zank, D. Miller, L. Wolfgang.

# ANNUAL STAFF



Row one: P. Hanson, P. Boettcher, M. Houn, B. Goede, M. Donnelly, L. Wolfgang, D. Miller, J. Schedler.

Row two: E. Lambrecht, K. Shong, D. Green, P. Christianson, M. Stubbe, A. Boettcher, C. Kelly, R. Hadorn, G. Erdman, A. Russell, J. Raether, G. Kling, R. LeBarron, D. Brunzlick, F. Shefchik, Miss Goodman, B. Welke, V. Troxel.

# NEWS STAFF



Row two: M. Houn, L. Dehnke, D. Bartz, G. Erdman, G. Kling, K. Shong, Miss Goodman, R. LeBarron, A. Zillmer, M. Donnelly, L. Wolfgang, D. Hulbert, B. Welke, D. Miller.

Row one: E. Lambrecht, B. Goede, M. Stubbe, P. Hanson.

# SENIOR CLASS PLAY



Row one: A. Russell, F. Shefchik, M. Houn, D. Brunzlick, M. Stubbe.  
Row two: B. Goede, D. Miller, F. Kawell, Mrs. Morgan, K. Shong, J. Schedler.

# JUNIOR CLASS PLAY



Row one: L. Dehnke, B. Lange, A. Hanson, C. Wright, V. Searles, A. Sperber, B. Frueh.  
Row two: Mrs. Funk, D. Rose, B. Funk, A. Biegel, D. Carlson, D. Schultz.  
Row three: R. Kot, C. Miller, C. Gillo, D. Hulbert, B. Welke, E. Thode.

## F. H. A.



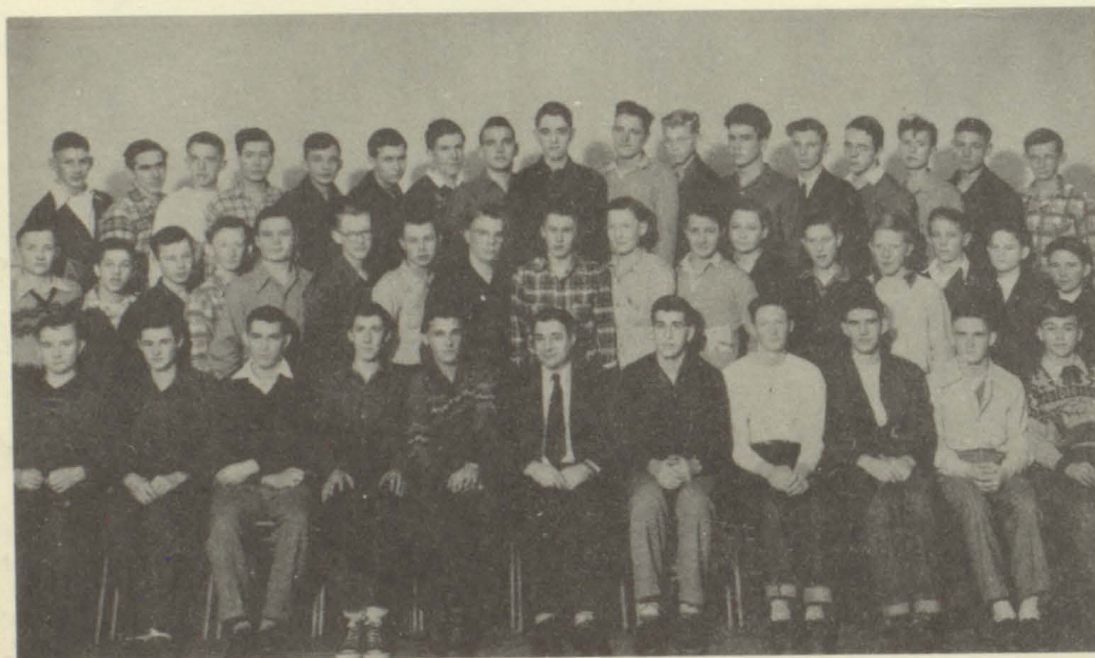
Row one: L. Wolfgang, F. Shefchik, D. Johnson, A. Russell.

Row two: B. Frueh, A. Ringhand, E. Draeger, R. LeBarron, D. Bartz, A. Richards, D. Green, D. Wangen, A. West, B. Raether, D. Johnson, J. Stensen.

Row three: J. Bauch, D. Douglas, L. Pettis, E. Tumm, J. Herrick, E. Roth, D. Rahl, K. Eaton, V. Weise, R. Haskins, J. Tumm, B. Bartlett, P. Boetcher, E. Lambrecht, M. Stubbe.

Row four: Miss Achterkerch, J. Raether, J. Kubera, C. Raether, G. Jaskowski, M. Rahl, C. Wright, G. Erdman, A. Hanson, J. Jones, R. Hadorn, E. Haskins, A. Cookley, M. Houn, Miss Reavley.

## F. F. A.



Row one: R. McCune, R. Kunz, D. Schultz, K. Zell, B. Schara, Mr. Hull, K. Shong, F. Kuehn, Z. Lowman, A. Kirkham, D. Russell.

Row two: V. Barka, K. Schultz, M. Rodd, H. Wolfgang, R. Gorka, K. Volbrecht, R. Powell, C. Raether, C. Magnussen, B. Watenphul, J. Ida, G. Gunderson, R. Lange, M. Holst, G. Marion, E. Schroeder, J. Kelly.

Row three: E. Stensen, D. Carlson, F. Raether, E. Gorka, R. Kot, G. Poirier, D. Senske, G. Raether, D. Steinke, L. Tumm, V. Hadorn, W. Shong, L. Ayres, B. Raether, E. Gorka, D. Schwock, J. Wolfgang.



# FORENSICS



Row one: C. Shong, D. Douglas, N. Schroeder, D. Johnson, A. Roth, F. Shefchik, E. Lambrecht, M. Stubbe.  
Row two: V. Weise, S. Schedler, C. Kelly, B. Staats, L. Wolfgang, Y. Rahl, K. Eaton, B. Bartlett, B. Newton.  
Row three: Mr. Hudson, J. Kubera, D. Brunzlick, M. Trumph, A. Roberts, M. Donnelly, E. Brunzlick, A. Russell, R. LeBarron.

# DEBATE



Row one: C. Shong, C. Kelly, A. Roth, B. Staats, E. Draeger.  
Row two: E. Sperber, M. Donnelly, Mr. Hudson, A. Russell, J. Bauch.

# STUDENT COUNCIL



Row one: A. Roberts, G. Kling, Mr. Hull, K. Shong, G. Erdman, A. Ringhand.

Row two: J. Goede, M. McCune, V. Troxel, B. Welke, C. Gillo, D. Bauch, F. Kawell, D. Schultz, N. Dickenson.

The Student Council is composed of representatives from all the classes and organizations. This body tries to improve the status of the students in school.

Among the more worthy accomplishments of the Student Council are: The system of regulating the hot lunch line and the serving of refreshments at the County Field Day. The Student Council is under the guidance of our able administrator, Mr. Hull.

# LIBRARY COUNCIL



Row one: G. Kling, A. Russell, B. Lange, Mrs. Morgan, M. Houn, L. Wolfgang, K. Shong.

Row two: B. Schroeder, D. Daniels, V. Troxel, Y. Rahl, A. Hanson, M. Shefchik, D. Haldeman.

This year a new organization was added to our school. It is the Library Council under the direction of Mrs. Morgan. At the beginning of the year they served a silver tea to raise money for books. They also joined the Jr. Literary Guild; an organization to get new books.

# SENIOR BADGER CLUB



Row one: C. Colby, J. McCune, N. Schroeder, H. Zearth, A. Ringhand, D. Hall, M. Shefchik, B. Newton, C. Shong.

Row two: Mrs. Bennett, J. Shong, I. Lange, D. Johnson, V. Wiese, Y. Rahl, A. Roberts, E. Brunzlick, E. Sperber, B. Staats, J. Johnson, G. Lange.

Row three: A. Albrecht, M. Zook, N. Dickinsen, G. Zank, B. Schroeder, H. Kling, D. Steinke, G. Warner, D. Haldeman, A. Rahl, R. Ringhand.

# JUNIOR BADGER CLUB



Row one: I. Lipke, A. Gregor, P. Murkovich, J. Sperber, F. Lambrecht, A. Roberts, D. Johnson, D. Balliett, A. Sperber, J. Jacobson, E. Zillmer, S. Kling.

Row two: Mrs. Bennett, B. Keberlein, G. Schedler, P. Thompson, R. Ramsey, J. Livermore, W. Schwoch, M. Frueh, J. Goede, D. Rucks, R. Shong, M. Anderson, R. Scott, M. Reetz, J. Erdman.

Row three: K. Daniels, M. Zearth, F. Barry, G. Wiese, G. Herrick, D. Reineke, J. Thompson, D. Lawson, E. Ringhand, L. Schimmelphenig, D. Rudolph, W. DuRocher, J. Moland, S. Warner, M. McCune.

# CLASS WILL

- I, Barbara Bqrlett, will and bequeath my energy to the REA.
- I, Donna Bartz, will and bequeath my efficiency to Avis Coakley.
- I, Arlys Boettcher, will and bequeath my interest in Osseo to Marilyn Shefchik.
- I, Phyllis Boettcher, will and bequeath my short, stubbornness to Dave Hulbert.
- I, Clarence Berry, will and bequeath my interest in "The Farmer's Daughter" to MGM.
- I, Doris Brunzlick, will and bequeath my speaking ability to Eugene Gorka.
- I, Phil Chrianson, will and bequeath my dry humor to Vivian Searles.
- I, Margaret Donnelly, will and bequeath my pleasant nature to future bill collectors.
- I, Herb Donner, will and bequeath my nightly escapades to the owls.
- I, Doris Douglas, will and bequeath my slim figure to Bill Welke.
- I, Kathleen Eaton, will and bequeath my alto voice to the Ensemble.
- I, Gail Erdman, will and bequeath my giggles to the fun house.
- I, Bill Goede, will and bequeath my technique to Romeo.
- I, Dorothy Green, will and bequeath my love for roller skating to Emil Thode.
- I, Ruth Hadorn, will and bequeath my ability to play basketball to Barbara Ida.
- I, Pat Hanson, could will and bequeath my trips to Menomonie, but why should I?
- I, Eileen Haskins, will and bequeath my future dates to Everette Stensen.
- I, Joyce Herrick, will and bequeath my ability to sleep in class to anyone who can get away with it.
- I, Marion Houn, will and bequeath my curls to Frances Witte.
- I, William Johnson, will and bequeath my deep voice to the bullfrogs.
- I, Joyce Jones, will and bequeath my stage-fright to Charlotte Schedler.
- I, Fritz Kawell, will and bequeath my beard to the Smith Bros.
- I, Colleen Kelly, will and bequeath my job at the rootbeer stand to anyone interested in meeting eligible bachelors, laundrymen, milk-haulers, salesmen, etc.
- I, Arlen Kirkham, will and bequeath my interest in the Frosh. to anyone who needs a pastime.
- I, Gary Kling, will and bequeath my ability to laugh at my own jokes to Bob Hope.
- I, Joan Kubera, will and bequeath my nickname "Dare-devil Joanie" to Jimmy Lynch and his Death Dodgers.
- I, Roseleye LeBarron, will and bequeath my flirtatious eyes to Boris Karloff.

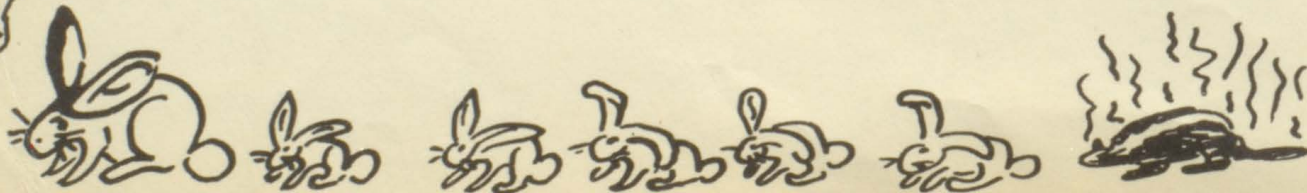
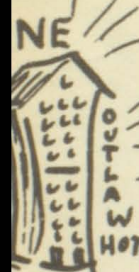
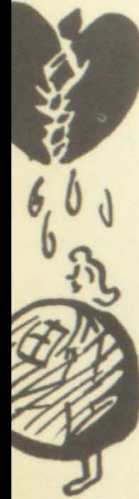
- I, Eleanore Lambrecht, will and bequeath my habit of being late to Longene-Whitnaure Watch Company.
- I, Gordon Luedtke, will and bequeath my ability to play football to Zane Lowman.
- I, Dean Miller, will and bequeath my bright remarks to the Burma Shave Company.
- I, Gerald Raether, will and bequeath my sessions in the hall to anyone who thinks they are in love.
- I, Beulah Raether, will and bequeath my frequent absences to Vivian Troxel.
- I, Jean Raether, will and bequeath my friendly relations with men to the United Nations.
- I, Dorothy Rahl, will and bequeath my West to the Indians.
- I, Marlene Rahl, will and bequeath my dates to a fruit cake.
- I, Adeline Richards, will and bequeath my long black hair to Carol Wright.
- I, Lowell Rodd, will and bequeath my physique to Wayne Shong.
- I, John Rosentreter, will and bequeath my levis to anyone who can wiggle into them.
- I, Eileen Roths, will and bequeath my ambition to be an airline stewardess to the American Airlines.
- I, Alayne Russell, will and bequeath my interest in an up-and-coming young pitcher to the Brooklyn Dodgers.
- I, Rosella Schalinske, will and bequeath my seat next to Richard Berry to Muriel Kirkham.
- I, John Schedler, will and bequeath my ability to talk about gladiolis to the florist.
- I, Faithhann Shefchik, will and bequeath my Bill to the birds.
- I, Ken Shong, will and bequeath my modesty to Gus Staats.
- I, Marilyn Stubbe, will and bequeath my ability to act to Marjorie Maine.
- I, Elmira Tumm, will and bequeath my love for hillbilly records to Joanne Johnson.
- I, Doris Wangen, will and bequeath my good behavior to Donald Erdman.
- I, Margaret Wilkinson, will and bequeath my clothes to a Fifth Avenue dress shop.
- I, Howard Wolfgang, will and bequeath my red hair to the blackbirds.
- I, Lois Wolfgang, will and bequeath my school spirit to all future A. H. S. students.
- I, Kenneth Zell, will and bequeath my corn to the bootleggers.
- I, Alvin Zillmer, will and bequeath my ability to play pool to Helen Zebarth.
- I, Julian Bichler, will and bequeath the class of '50 to whatever future may claim them.

# PROPHECY

"And they're off--they are coming around the far turn; here comes Girdle in the stretch; Assault and Battery are coming up fast; College Boy and College Girl are neck and neck with Mother-in-law nagging along behind!"

This is the way I, **DEAN MILLER**, made my first million--yes, folks, you guessed it, by calling the races at Santa Anita. It had always been my ambition to own and pilot a plane so packing my million in an over-night case, I began my journey to Yuma, Arizona, where my dear friend and classmate, **JOHN FREDERICK ROSENRETER**, owns and operates the world's largest airplane plant. There I obtained the "Sand Burr Express". To seal the deal John asked **DONNA BARTZ**, his receptionist, to make a reservation for us at the swankiest nightclub in town--The Outlaw-- owned and run by a gay divorcee **JOYCE HER-RICK**, who obtained it as alimony from her fourth husband. We were served a delicious meal which we later learned was prepared by our hash-slinging classmate, **FRITZ KAWELL**. We lost interest in our meal, however, when we spied a bright red head above a pink bubble. Later we discovered the head was attached to the body of our old friend **MARIONa del HOUNa**, Spanish bubble dancer- extraordinary. After seeing the show I started for Texas. Deep in the heart of it the engine sputtered; gazing at the fuel gage I saw what I feared, I was out of gas. I made a beautiful three-point landing. Upon alighting from the plane I saw nothing but long horns and tumbleweed. I walked for miles and finally came upon a ranch house. The headquarters of the 7-11 Ranch owned by **EILEEN ROTH** and operated by her foreman, **ARLEN KIRKHAM**. After borrowing enough gas to get into town, I landed at a beautiful Galveston airport. While my plane was being refueled I sauntered down the street and whom should I meet but **FAITHANN SHEFCHIK**, the wife of Henry Ford, IV. She told me that **JOYCE JONES** supervises an orphanage in a nearby town. I boarded the "Sand Burr Express", glanced at the map and decided that the next stop would be the glamour city of the world--Hollywood.

I decided to take in the Rosebowl game upon my arrival as Wisconsin was playing UCLA. The University star this year is **LOWELL RODD**, former classmate at AHS. There I met **GARY KLING**, who has taken over the Bob Hope Show. He said that the latest movie, "Kirkham Valley Katie" was in the process of being made. I decided to tour the set and found **ARCHIE ZILLMER** as cinematographer. There I found the star, **MARGARET WILK-INSON**, who was wearing a white fur evening wrap which I recognized as a product of **KEN SHONG'S** Rabbit Farms. **LOIS WOLFGANG**, "Snappo Pictures" internationally famous hair stylist, was busy shampooing **ROSELEYE Le BARRON'S** hair. Roseleye now



poses for **WILLIAM GOEDE**, well known artist. Bill also directs the popular motion-picture and recording band, "Eighteen Knights and Nine Days."

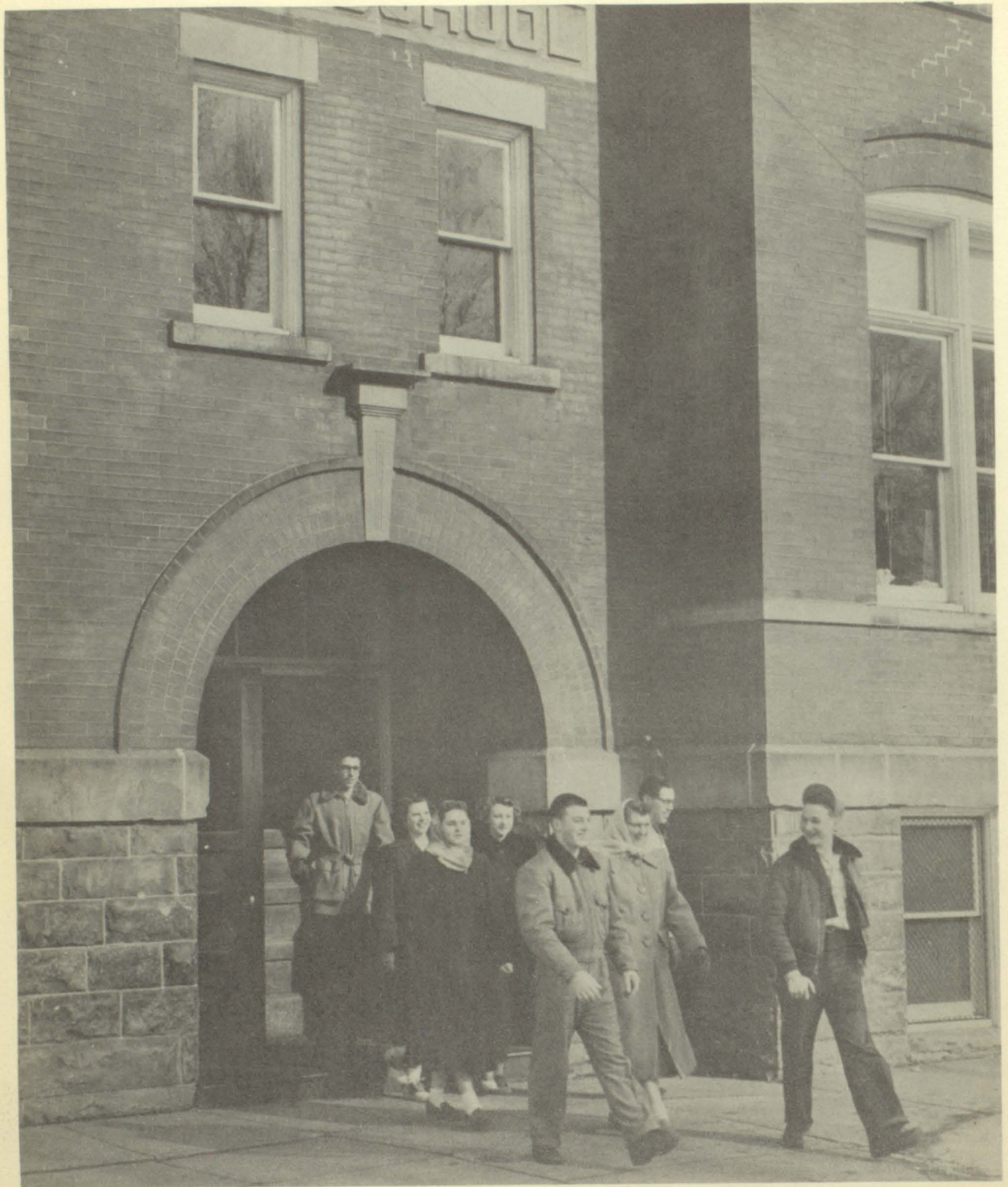
I decided that I had experienced enough excitement in the U.S. for a spell, so I jumped in the "Sand Burr Express" and soared over 'the blue Pacific' to Hawaii. There I found **DOROTHY RAHL**, famous hula dancer, entertaining the Marines in an appropriate costume made for her by **ADELINE RICHARDS**. There among the Marines I spied a civilian, **KENNY ZELL**. After talking to him I discovered that he had come to Hawaii to teach the natives crop rotation. I became lonesome so I journeyed home; on the way I stopped at Ismay, Montana. I walked down the street and went into the general store, "Ye Old Quality Store". where I found **PHYLLIS BOETTCHE**r waiting on customers. She was telling me that **EILEEN HASKINS** was in town teaching the local girls Home Economics, when I walked **BARBARA BARTLETT**. I was told that she was now putting her levis to good use as she and her husband, Gene Dobrenz, live on a dude ranch. Noticing a strange odor I found the source to be limburger cheese, made by **BILL JOHNSON**, president of the United States Cheese Factory. Thinking I needed some fresh air, I decided to visit St. Louis, Missouri.

There I saw a baseball game in full swing and who do you suppose was in the stands? You guessed it, **ALAYNE RUSSEL**. As I left I bumped into **JOHN SCHEDLER**, pastor of the First Church. It seems that he followed in his father's footsteps as he raises glads on the side. He informed me that **ELMIRA TUMM** is now advertising for the Tumm Anti-Burp Company.

After an exciting day in St. Louis I found it was time for my annual physical check-up. I had heard of the excellent reputation of Cook County Hospital in Chicago, and thought "that's the place for me." There I found **COLLEEN KELLY**, chief X-ray technician and her two able assistants, **GAIL ERDMAN** and **ARLYS BOETTCHE**r examining **BEULAH RAETHER**. Upon signing the register I noticed **KATHLEEN EATON'S** name and being my inquisitive self inquired as to why she was a patient. I learned that she was suffering from a broken heart and as a last resort had joined the Lonely Hearts Club. Upon leaving I met **DORIS WANGEN** who was in the city selling monkeys for experimental purposes.

Washington D.C. was my next stop. There I found **MARILYN STUBBE**, first lady president and her "right-hand woman", **MARGARET DONNELLY**, fighting for equal rights for wom-

(Continued on Page 47)



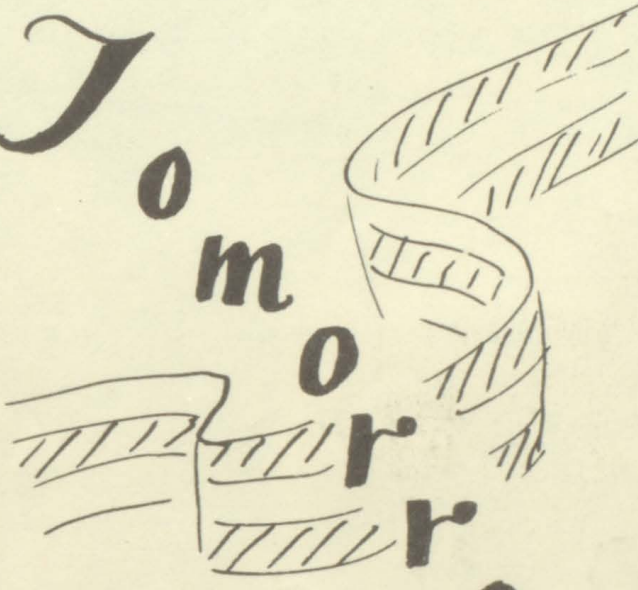
**WE LEAVE**





★ ★ ★  
 ★ ★ ★  
 S T A R S  
 ★ ★ ★  
 ★ ★ ★  
 ★ OF ★

T  
 o  
 m  
 o  
 r  
 o  
 w




Yesterday



en. I decided to visit a session of Congress and there was my old friend, **DORIS BRUNZLICK**, Speaker of the House.

From there I journeyed to New York City for a much needed holiday. The bright lights of Broadway beckoned me to the theatre which was presenting 'Romeo and Juliet' with **GORDON LUEDTKE** and **RUTH HADORN** in the title roles, under the inspired direction of **HOWARD WOLFGANG**.

The next evening I went to the Madison Square Garden to take in the Roller Derby, starring **DOROTHY GREEN**, "The Whiz on Wheels". The music was furnished by the Schlegelmilch Symphony Orchestra with **PAT HANSON** playing the bass. As I was leaving a loud voice called my attention to a pup tent pitched on a street corner. I recognized the voice of **JOAN KUBERA**, and having her excellent recommendation of the show, I went in to see it. Upon entering I discovered **ROSELLA SCHALINSKI** and her "Tiny Troop of Trained Fleas." Assisting her was **ELEANORE LAMBRECHT**, the water girl. When I asked her how she went about watering fleas I was told it was done with a special type medicine dropper from **PHIL CHRISTIANSON'S** Drug Store back in St. Louis.

With my financial resources nearly exhausted I boarded the "The Sand Burr Express" and headed back to Wisconsin. As I flew over the lakeside metropolis of Milwaukee, I noticed this sign painted on top of a skyscraper, "Drink Schlitz—The beer that satisfies—We stand behind every bottle we sell— **HERB DONNER**, President and owner". I continued in a northwesterly direction until I reached Augusta. Looking through the telephone book at Aunt Jo's Hotel I saw the names of a few of my old classmates and decided that I would spend my last buck for a shindig for the rest of the 'old gang'. The first guests to arrive were **MARLENE RAHL** Olson and her four blond kiddies from Osseo. **GERALD RAETHER** arrived a few minutes later, he had just come in from making a delivery of lettuce to the Ken Shong's Rabbit Farms. **JEAN RAETHER** and **DORIS DOUGLAS** arrived next. Jean is now square dance caller at Fourniers, and Doris is a school marm in the town of Wilson. The last to arrive was **CLARENCE BERRY**; it seems that he got one of the Pettis milk trucks stuck in the mud out in Thompson Valley and had a little trouble getting it out. After much discussion about our former classmates and a lot of reminiscing about the "good old days", my guests departed.

With my finances exhausted, I sold the "Sand Burr Express," and hopped a train back to Santa Anita to begin work, so in due time I might again take a vacation and visit my former classmates from AHS--the mighty class of '50.

# ACKNOWLEDGMENTS

THE NU CAFE

SLIMS TAVERN

BILL & JACKS

JIMS TAVERN

THE GREEN LATERN

WELKES STORE & LOCKERS

STRINGERS

WRIGHTS STANDARD SERVICE

RICHARDS DAIRY BAR

EMANUELS MEAT MARKET

GAMBLE STORE

KORTH IGA

FARMERS BAR

COLBY'S DRUG STORE

C. E. SIEF & SONS

BETTER DAIRIES

AUGUSTA AUTO COMPANY

FORD GARAGE

THE UNION

COAST TO COAST

SWARTZ SHELL SERVICE

CENTURY DRY CLEANERS

WE WISH TO THANK THE ABOVE PATRONS FOR HELPING TO MAKE OUR ANNUAL POSSIBLE.

